

Catalog No. Description List

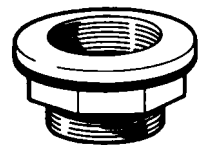
FLOOR & WALL FITTINGS
INLET FITTINGS FOR CONCRETE POOLS

862001	American Products Inlet - 1-1/2" FIP	3.24
SP1022	Hayward Inlet - 1-1/2" FIP X 2" MIP	3.36
SP1022-S	Hayward Inlet - 1-1/2" SKT X 2" MIP	3.36
SP1022S-BLK	Hayward Black Inlet - 1-1/2" Socket X 2" MIP	3.60
54-2405	Pac-Fab Standard Body Inlet - 1-1/2" Socket X 1-1/2" FPT	3.52
54-2402	Pac-Fab Long Body Inlet - 1-1/2" Socket X 1-1/2" FPT	4.20
54-2423	Pac-Fab "Insider" Inlet Body, 2" Slip Accepts 1-1/2" Eyeball Fittings	5.70
54-2419	Pac-Fab Black Standard Body Inlet - 1-1/2" Socket X 1-1/2" FPT	4.36
54-2417	Pac-Fab Black Long Body Inlet - 1-1/2" Socket X 1-1/2" FPT	5.02
54-2423	Pac-Fab Black "Insider" Inlet Body, 2" Slip Accepts 1-1/2" Eyeball Fittings	6.80
8429-0000	Swimquip® 1-1/2" Socket Wall Inlet Assembly With 1" Eyeball And Orifice Nozzle Conversions For 3/4", 1/2", 3/16"	22.20



INLET/VACUUM FITTINGS FOR LINER/PREFAB POOLS

862051	American Products Prefab Inlet - 1-1/2" FIP W/Faceplate	11.13
SP1023	Hayward Prefab F/G Inlet - 1-1/2" FIP X 2" MIP With Locknut	6.20
SP1023-S	Hayward Prefab F/G Inlet - 1-1/2" SKT X 2" MIP With Locknut	6.20
SP1408	Hayward Prefab Vinyl Inlet - 1-1/2" FIP With Faceplate & Locknut	28.42
SP1408-B-BLK	Hayward Black Faceplate Only, For Sp1408 Fitting	6.50
54-2414	Pac-Fab Prefab F/G Inlet - 1-1/2" FIP With Locknut	7.02
54-2411	Pac-Fab Prefab F/G Inlet - Long Body - 1-1/2" FIP With Locknut	9.74
54-2410	Pac-Fab Prefab Vinyl Inlet - 1-1/2" FIP With Faceplate & Locknut	10.30
54-2420	Pac-Fab Black Prefab Vinyl Inlet - 1-1/2" FIP With Faceplate & Locknut	13.40
8430-0050	Swimquip® Prefab Vinyl Inlet - 1-1/2" FIP With Faceplate, Locknut And Complete Eyeball Assembly With Multiple Orifice Conversions	18.10
8430-0000	Swimquip® Prefab Vinyl Inlet - 1-1/2" Socket With Faceplate, Locknut And Complete Eyeball Assembly With Multiple Orifice Conversions	18.10

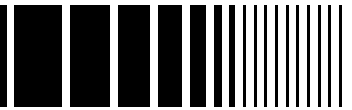


THREADED DIRECTIONAL EYEBALL INLET FITTINGS

SP1419-A	Slotted Orifice - 1 1/2" MIP Body	3.36
SP1419-B	3/8" Orifice - 1 1/2" MIP Body	3.14
SP1419-C	1/2" Orifice - 1 1/2" MIP Body	2.64
SP1419-D	3/4" Orifice - 1 1/2" MIP Body	2.64
SP1419-E	1" Orifice - 1 1/2" MIP Body	2.64
SP1420	1" Diameter Rubber Nozzle - 1 1/2" MIP Body	5.62



(Continued)

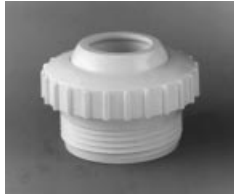


Catalog No. Description List



THREADED DIRECTIONAL EYEBALL INLET FITTINGS - (CONTINUED)

54-2087	Pac-Fab "Ultimate" Eyeball Fitting With Three Nested Eyeballs That Allow For 1/2", 3/4" Or 1" Opening - 1-1/2" MIP	5.04
54-1201	Pac-Fab Eyeball Fitting With 1/2" Orifice - 1-1/2" MIP	3.00
54-1202	Pac-Fab Eyeball Fitting With 3/4" Orifice - 1-1/2" MIP	3.00
54-1208	Pac-Fab Black Eyeball Fitting With 1/2" Orifice - 1-1/2" MIP	3.80
54-1209	Pac-Fab Black Eyeball Fitting With 3/4" Orifice - 1-1/2" MIP	3.80



"INSIDER" DIRECTIONAL EYEBALL INLET FITTINGS

SP1422-D	Hayward Extended "Insider" Inlet & Eyeball - Fits 1-1/2" Pipe	6.24
54-2000	Pac-Fab "Insider" - Fits 1" Pipe, 3/4" Jet Opening With Conversion Orifices For 1/2", 3/8" & Test Plug	5.04
54-2002	Pac-Fab "Insider" - Fits 1-1/2" Pipe, 1" Jet Opening With Conversion Orifices For 3/4", 1/2" & Test Plug	5.04
54-2001	Pac-Fab Black "Insider" - Fits 1" Pipe, 3/4" Jet Opening With Conversion Orifices For 1/2", 3/8" & Test Plug	5.96
54-2003	Pac-Fab Black "Insider" - Fits 1-1/2" Pipe, 1" Jet Opening With Conversion Orifices For 3/4", 1/2" & Test Plug	5.96
PEX1.5	Pac-Fab 1-1/2" PVC Pipe Extender	3.36
PEX2.0	Pac-Fab 2" PVC Pipe Extender	3.88
8434-000	Swimquip® "Insider" - Fits 1-1/2" Pipe, 1" Jet Opening With Conversion Orifices For 3/4", 1/2" And 3/16".	12.18
8434-0100	Swimquip® Charcoal Gray "Insider" - Fits 1-1/2" Pipe, 1" Jet Opening With Conversion Orifices For 3/4", 1/2" And 3/16".	12.18



ADJUSTABLE FLOW - FLOOR & WALL FITTINGS

SP1425	Hayward Adjustable Floor Inlet - 1-1/2" FIP X 2" MIP	17.20
SP1423	Hayward Non-Adjustable Wall Inlet - 1-1/2" FIP X 2" MIP	12.52
SP1424	Hayward Adjustable Wall Inlet - 1-1/2" FIP X 2" MIP	17.68
A41014-0	S.R. Smith CPB Adjustable Floor Inlet - 1-1/2" FIP	87.06
A41020	S.R. Smith CPB Adjustable Wall Inlet - 2" FIP	111.76

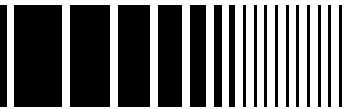


GRATES & PLUGS FOR INLET FITTINGS

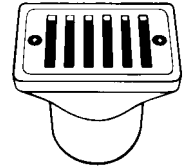
SP1026	Hayward Grate Insert - 1-1/2" MIP	2.54
SP1022-B	Hayward Plug With Gasket (Flush) - 1-1/2" MIP	1.52
SP1022-C	Hayward Plug With O-Ring - 1-1/2" MIP	1.46



Gutter Fittings



Catalog No.	Description	List
GUTTER FITTINGS		
SP1019	Hayward ABS Plastic Gutter/Deck Drain - 2" FIP/2" Socket	7.88
54-2037	Pac-Fab 2" X 4" White ABS Plastic Gutter Drain, 2" Socket	7.90
54-2097	Pac-Fab 2" X 4" Black ABS Plastic Gutter Drain, 2" Socket	10.40
54-2039	Pac-Fab 2" X 6" White ABS Plastic Gutter Drain, 2" Socket	10.40
A41046-0	S.R. Smith 2" X 6" CPB Gutter Drain, 2" FIP	75.44
A41035-0	S.R. Smith 2" X 6" CPB Full Angle Gutter Drain, 2" FIP	106.30

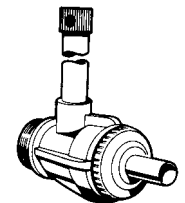


CHROME PLATED BRASS VACUUM FITTINGS		
A41090-0	S.R. Smith 1-1/2" FIP CPB Vacuum Fitting With Plug	57.18
4423-GS	Standard Bronze 2" FIP X 2-1/2" MIP CPB Vacuum Fitting	59.30
4227	Standard Bronze 2" MIP CPB Flush Plug For Vacuum Fitting	27.14
18000	Standard Bronze 1-1/2" MIP Bronze Hose To Wall Adapter With Swivel Nut	29.18
18002	Standard Bronze 2" MIP Bronze Hose To Wall Adapter With Swivel Nut	47.92

HYDROTHERAPY FITTINGS FOR GUNITE/CONCRETE POOLS

HAYWARD JET-AIR HYDROTHERAPY FITTINGS

SP1430	Hayward Jet-Air Fitting For Permanent Installation, Use With Any 1-1/2" FIP Wall Fitting (SP1022), 1-1/2" FIP X 1-1/2" MIP	11.50
SP1430S	Hayward Jet-Air Fitting, As Above, Except 1-1/2" Socket X 1-1/2" MIP	11.50
SP1433	Hayward Jet-Air Fitting Package Includes SP1430 Jet-Air Fitting, SP1022 Receptacle And SP1420 Nozzle	18.44
SP1433S	Same As Hayward SP1433 Except Includes SP1433S Jet-Air Fitting.	17.66
SP1431-1	Hayward Jet-Air Fitting Package For In-Pool Installation. Complete With Removable 18" Air Supply Tube With Cap And SP1420 Nozzle.	25.08
SP1431-2	Same As Sp1431-1 Except With 24" Air Supply Tube.	25.08



JACUZZI HYDROTHERAPY FITTINGS		
9414-4466	Jacuzzi Classic C20E Gunite Jet With Adjustable Flow Control, 1-1/2" Socket (Water) X 1/2" Socket (Air, Requires 15-20 Gpm For Proper Operation.	35.40
9414-4474	Jacuzzi CSJ Gunite Swim Jet With 1-3/8" Dia. Nozzle, 1-1/2" Socket (Water) X 1/2" Socket (Air, Delivers Up To 90 Gpm For Swim Spa Applications.	35.40